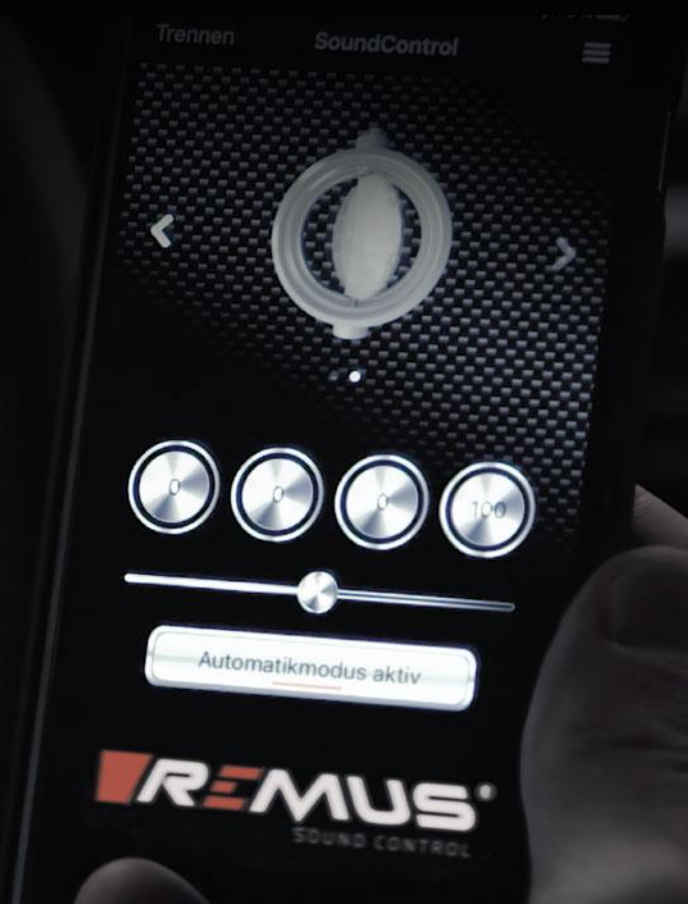


INSTALLATION INSTRUCTIONS

MINI JCW GP | 2020 →

SOUND CONTROL

NOT
APPROVED
FOR USE ON
PUBLIC
ROADS!



SYMBOLS

The following symbols are used throughout these installation instructions:



TOOLS AND PROTECTIVE EQUIPMENT REQUIRED



TIGHTENING TORQUE



LUBRICATION



HAND TIGHTEN



INSTALLATION TIP



CAUTION OR IMPORTANT



MOVEMENT ARROW



INDICATOR ARROW



CERAMIC PASTE

For lubrication and corrosion protection on screws, bolts, fits and pins. Free of standard and heavy metals, prevents sticking and seizing, neutral to all known sealing materials, non toxic, up to +1400°C heat resistant, short term up to +1600°C, prevents wear and tear.



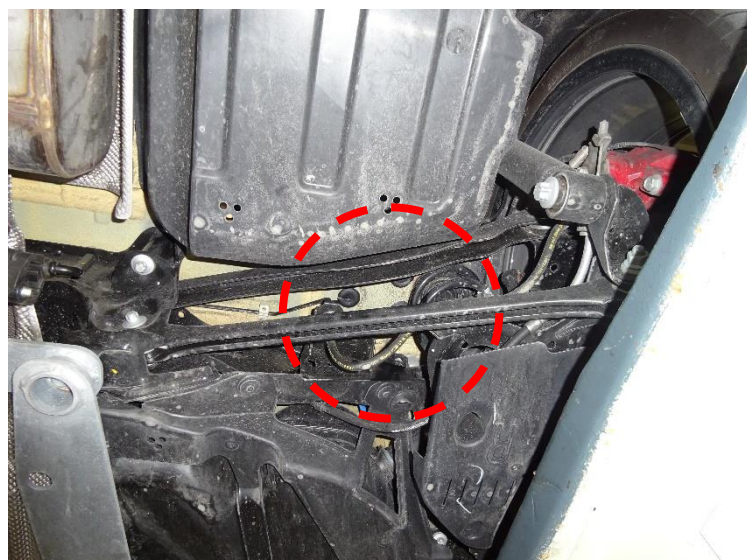
TOOLS AND EQUIPMENT

Use appropriate safety equipment like eye protection and mechanic gloves! Use appropriate and working tools for mounting and dismounting of the exhaust system.

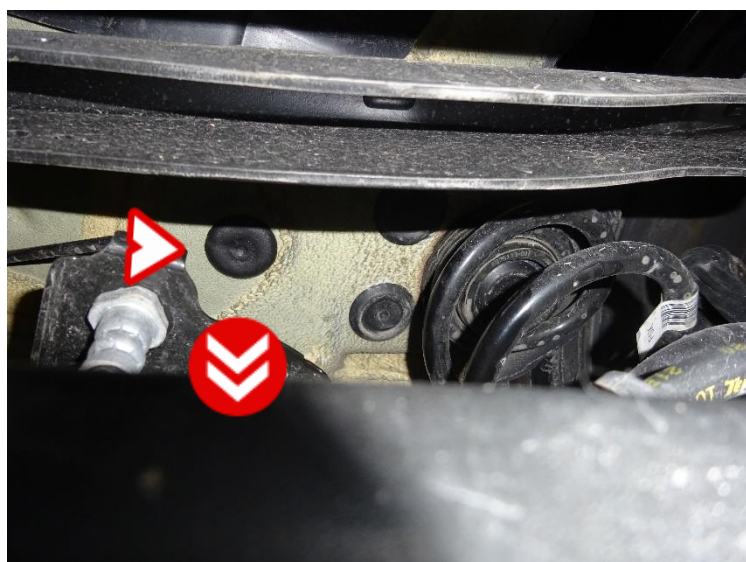




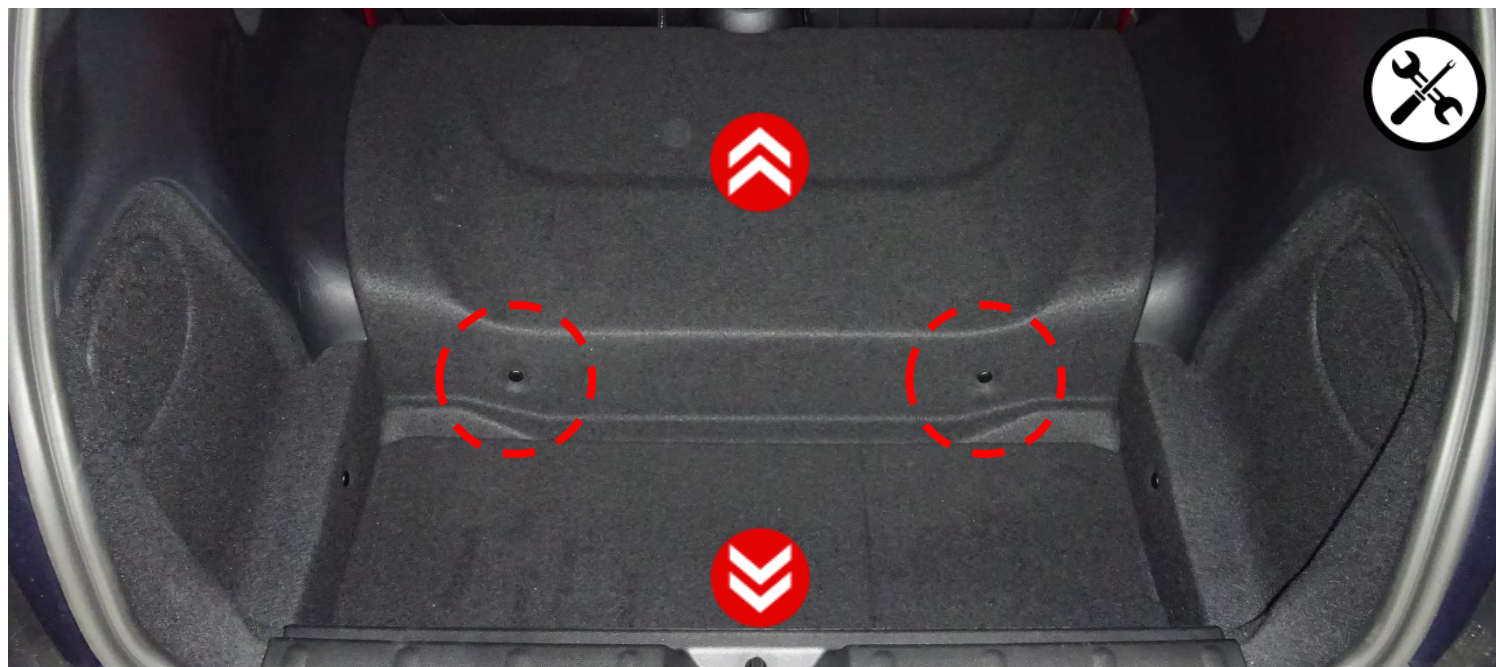
pos	pcs	packing content
A	1	sound controller
B	1	bluetooth button
C	1	OBD adapter
D	1	actuator with spring
E	1	power cable
F	1	actuator cable
G	2	connector
H	4	cable ties
I	1	adhesive socket
J	3	nuts M5
K	1	user manual



Remove the rubber seal.



Remove the trunk coverings.



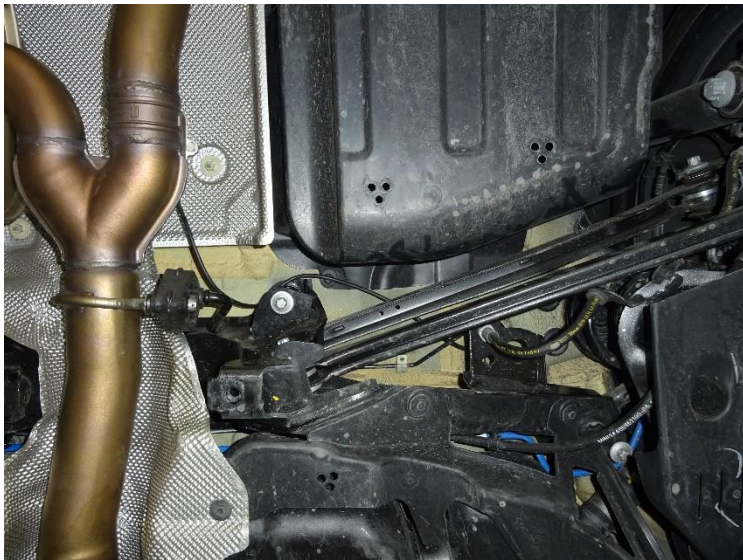
Insert the REMUS actuator cable into the car's body carrier.



Wire the actuator cable along the car's chassis to the REMUS exhaust flap. Use cable ties to fix the cable into position!



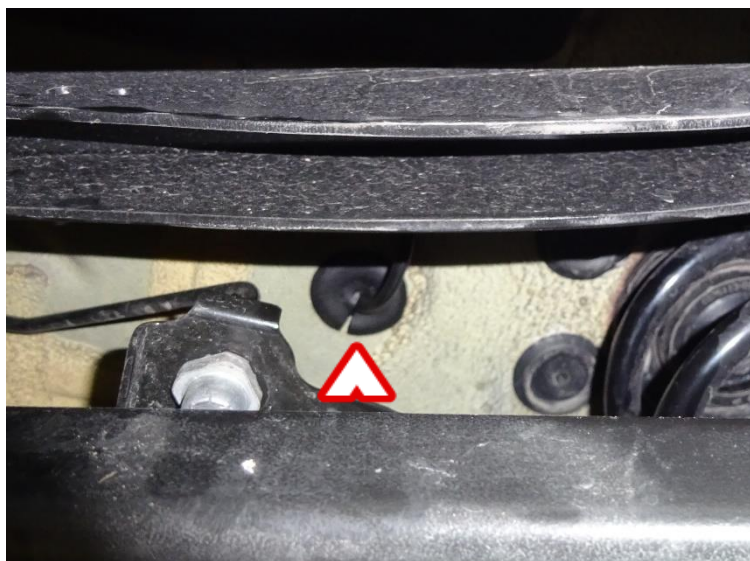
Make sure the cable can not come into contact with hot or moving parts!



Connect the actuator cable with the REMUS actuator.



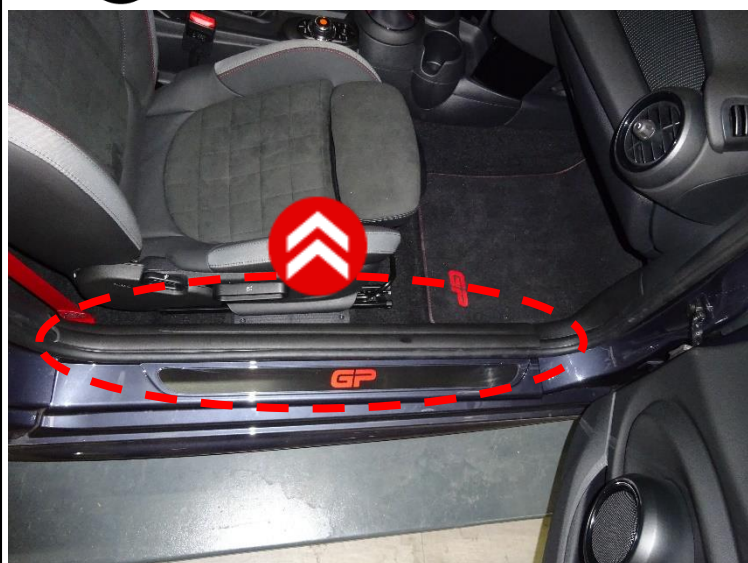
Cut in the rubber sealing to fit throw the actuator cable.
Remount the rubber seal.



Carefully remove the plastic side cover.



Make sure to not damage the cover!



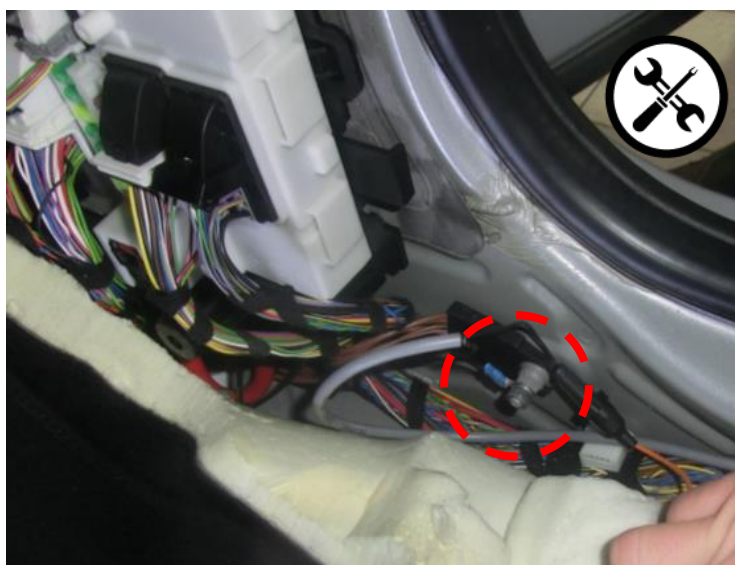
Carefully remove the plastic cover.



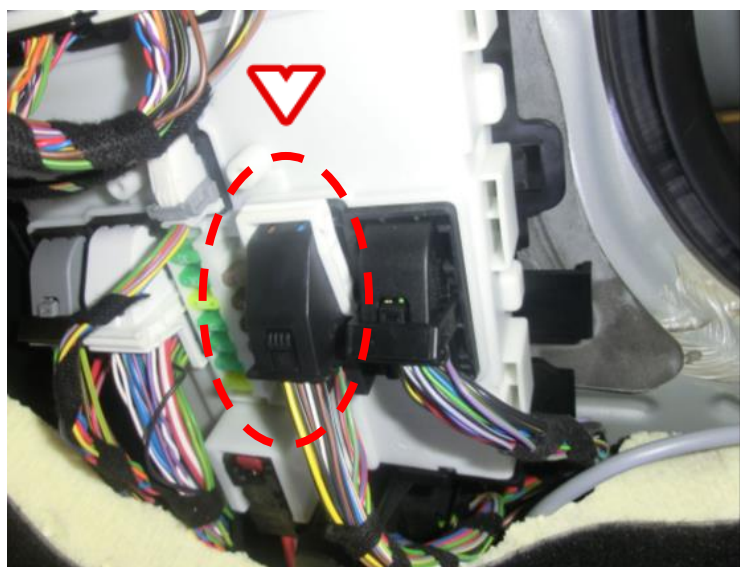
Make sure to not damage the cover!



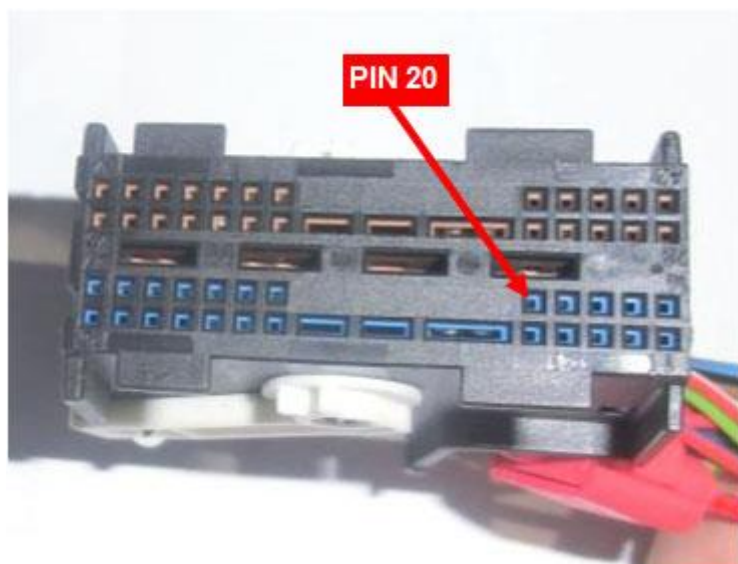
Connect the ring connector of the black REMUS power cable onto the vehicle ground.



Pull the clip upwards and disconnect the plug.



Connect the red wire of the REMUS power cable to the wire of PIN 20, by using the supplied connector!
Reconnect the plug and pull the clip down.



Route the REMUS power cable under the insulation and plastic covers, back to the trunk.



Connect the REMUS sound controller with the actuator cable and power cable.
Fix the REMUS control unit in the cavity using the supplied adhesive socket and cable ties.



FINAL STEPS

IMPORTANT: reinstall the dismantled or partially removed stock parts (wheel arches, bumper, plastic covers etc.); check vehicle manufacturer manual for tightening torques.

IMPORTANT: make sure all the nuts and bolts are sufficiently tightened. In case the exhaust system touches the cowling or other parts, repeat the adjustment of the exhaust system or contact your authorized dealer.

IMPORTANT: clean all exhaust components before the first start of the engine or the stains will burn onto the surfaces!

TROUBLESHOOTING

Problem	Possible cause	Solution
Exhaust gas is leaking out of the exhaust system	loosened clamp	tighten all connections to specified torque
	connection is not completely joined	loosen the connection and tap it into place, tighten the connection to specified torque
Valve is not working / moving	Valve is mechanical stuck	Remove the actuator and try to move the valve by hand. Use spray lubricant (WD-40® or equivalent) to make the valve working again.
	Valve is not working correct	Make sure the actuator is powered correctly. Make sure the actuator is mounted properly onto the valve and the valve spins correctly.
Exhaust system rattles / doesn't fit properly	Exhaust System is not mounted correct	loosen all connections again and readjust/align the whole system once more



THE SOUND OF

FIRST CLASS QUALITY DESIGNED & BUILT IN EUROPE | AUSTRIA

www.remus.eu

 **REMUS Innovation GmbH**
Ruhmannstraße 11
A-8570 Voitsberg